

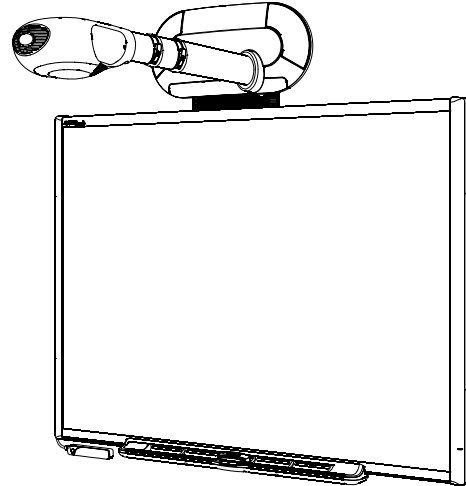
# SMART Board™ Interactive Whiteboard System

## Preliminary Specifications – Model 680i

### Physical Specifications

#### Unifi 35 Projector

<b>Size</b>	25 7/8" W × 14 3/8" H × 48" D (Max.) (65.7 cm × 36.5 cm × 121.9 cm)
<b>Extended Connection Panel</b>	7 5/8" W × 1 1/4" H × 1 3/8" D (19.4 cm × 3.2 cm × 3.5 cm)
<b>Weight</b>	33 lb. (15.0 kg)
<b>Shipping Size</b>	30" W × 19" H × 45" D (76.2 cm × 48.3 cm × 114.3 cm)
<b>Shipping Weight</b>	52 lb. (23.6 kg)



#### SMART Board 680 Interactive Whiteboard

<b>Size</b>	65 1/4" W × 49 1/2" H × 5 1/8" D (165.7 cm × 125.7 cm × 13.0 cm)
<b>Active Screen Area</b>	61 5/8" W × 46 1/8" H (156.5 cm × 117.2 cm) 77" diagonal (195.6 cm)
<b>Weight</b>	30 lb. (13.6 kg)
<b>Shipping Size</b>	73" W × 56" H × 5 1/2" D (185.4 cm × 141.0 cm × 14.0 cm)
<b>Shipping Weight</b>	45 lb. (20.5 kg)

All dimensions +/- 1/8" (3.2 mm). All weights +/- 2 lb. (0.9 kg).

### Standard Features

<b>Software</b>	SMART Board software and Notebook™ software. Free software upgrades are available at <a href="http://www.smarttech.com/support/software/index.asp">www.smarttech.com/support/software/index.asp</a> .
<b>Certifications</b>	UL (Canada/U.S.), CE, FCC, VCCI. Certifications for Japan and Mexico are pending
<b>Warranty</b>	Two-year limited equipment warranty on the projector, control module and extended connection panel. The projector lamp has a 500 hour/90 day warranty. The interactive whiteboard has a five-year limited equipment warranty upon registration. See warranty documents for details.
<b>Mounting Template</b>	Template ensures a simple installation and accurate alignment between the Unifi 35 projector and your SMART Board 680 interactive whiteboard. Use in place of the installation instructions provided with the interactive whiteboard.
<b>Cables</b>	9' 10" (3.0 m) HD-DB15 male-to-male video, 9' 10" (3.0 m) DVI-I to HD-DB15 male video, 9' 10" (3.0 m) 3.5 mm stereo audio, and 5' 11" (1.8 m) and 16' 5" (5.0 m) USB cables provided

### Interactive Whiteboard Features

<b>Pen Tray</b>	Optical sensors in the pen tray detect when a pen or eraser is lifted from the tray. LEDs show the active tool.
<b>Pens and Eraser</b>	Black, blue, red and green pens and a rectangular eraser
<b>Resolution</b>	Touch resolution is approximately 4000 × 4000
<b>Screen Surface</b>	The hard-coated polyester surface is tear proof, optimized for projection, compatible with dry-erase markers and is easily cleaned with whiteboard cleaner
<b>Digitizing Technology</b>	Analog resistive
<b>Frame Finish</b>	Two-tone gray (approximates Pantone® gray 18-0601) and Ultrasonic Chrome (approximates metallic Pantone 877c)
<b>Wall-Mount Bracket</b>	32" (81.3 cm) wide with five screws and drywall anchors to support a wall-mounted interactive whiteboard
<b>Installation Instructions</b>	Do not use when installing the 680i system. The installation instructions are for interactive whiteboard installations that do not include the Unifi projector.

## **Unifi 35 Projector Features**

<b>Unifi On-Screen Interface</b>	Includes interactive tools for controlling the projector, making notes over projected images and saving ScratchPad™ pages to a USB storage device	
<b>Projector Head</b>	Includes a focus ring and a side-mounted access door for lamp change	
<b>Display Type</b>	True XGA (1024 × 768) projector	
<b>Display Technology</b>	DLP® technology by Texas Instruments® using a one panel 0.7" DDR DMD™ chipset and featuring Vikuiti™ Super Close Projection technology from 3M	
<b>Brightness</b>	1200 ANSI lumens, minimum	
<b>Lamp Life</b>	2000 hours (Standard mode), 3000 hours (Economy mode)	
<b>Aspect Ratio</b>	4:3 native, with support for 16:9	
<b>Contrast Ratio</b>	1500:1 (FO/FO) (typical)	
<b>Video Compatibility</b>	NTSC/PAL/SECAM/Composite/S-video/Component (YPbPr/YCbCR)/SDTV (480i, 576i)/EDTV (480P, 576P)/HDTV (720P, 1080i) VGA/SVGA/SGA/SXGA/MAC/(UXGA)	
<b>Synchronization</b>	Auto image synchronization (auto tracking/frequency/position adjustment/source detect/phase detect)	
<b>Scanning Rate</b>	H-sync 15 kHz–82 kHz, V-sync 50 Hz–85 Hz	
<b>Color</b>	True color (16.7 million 24-bit colors)	
<b>Audio System</b>	Integrated stereo amplifier and speakers (20 watts per channel)	
<b>Mounting Hardware</b>	Hardware supplied for mounting the Unifi projector and the extended connection panel to framed and concrete walls	
<b>Input/Output Connections</b>	DVI-I jack	- analog or digital projector video input
	HD-DB15 jack	- RGB video from computer, linked to extended connection panel
	Two 3.5 mm stereo jacks	- audio inputs, one linked to extended connection panel
	3.5 mm stereo jack	- audio output
	Mini DIN 4-pin connector	- S-video input, linked to extended connection panel
	RCA jack	- composite video input, linked to extended connection panel
	Two RCA jacks	- stereo audio input, linked to extended connection panel
	Three RCA jacks	- component video input
	Two USB A receptacles	- one for USB storage device, linked to extended connection panel
		- one for USB link to interactive whiteboard
	USB B receptacle	- computer data connection, linked to extended connection panel
	RS-232 (DB9) jack	- serial connection
	Power reset connector	- linked to extended connection panel Reset button
	AC power receptacle	- accepts standard IEC power cable or adapter
<b>Projector Noise</b>	34 dBA (Standard mode) / 32 dBA (Economy mode)	
<b>Power Supply</b>	100V–240V AC, 6A, 450 W	
<b>Power Switch</b>	Master power control switch	
<b>Power Cable</b>	3 × 14' 9" (4.5 m) power cables provided (U.S., UK and Europe)	
<b>Power Consumption</b>	450 W maximum	
<b>Remote Control</b>	Provides an alternate method of controlling the 660i system's major features	

## **Extended Connection Panel Features**

<b>Input/Output Connections</b>	HD-DB15 jack	- RGB computer video input
	3.5 mm stereo jack	- computer audio input
	USB A receptacle	- connection for USB storage device
	RCA jack	- composite video input
	Two RCA jacks	- stereo audio inputs
	Mini DIN 4-pin connector	- S-video input
	USB B receptacle	- computer data input
<b>Power Button</b>	Turns the Unifi projector and interactive whiteboard on or off	

---

## Control Module Features

<b>Power Button</b>	Large power button, with illuminated status ring, turns the system on or off
<b>Menu Button</b>	Shows and hides the Unifi on-screen interface
<b>Volume Control</b>	Adjusts the integrated audio system's volume

---

## Storage and Operating Specifications

<b>Storage</b>	-22°F to 122°F (-30°C to 50°C) with 90% humidity, non-condensing
<b>Operation</b>	from 0' to 2500' (0 m to 762 m) 50°F to 95°F (10°C to 35°C) with 20–80% humidity, non-condensing from 2500' to 5000' (762 m to 1524 m) 50°F to 86°F (10°C to 30°C) with 20–80% humidity, non-condensing from 5000' to 10000' (1524 m to 3048 m) 50°F to 77°F (10°C to 25°C) with 20–80% humidity, non-condensing

---

## SMART Board Software 9.5 Computer Requirements

<b>Windows Computers</b>	Pentium® II 450 MHz processor 128 MB of RAM (256 MB recommended) 136 MB of free hard disk space for minimum installation (511 MB for full installation with Gallery collections) Windows NT® 4.0 (SP6), Windows 98 operating system or later Microsoft® Internet Explorer® 6.0 or later Macromedia® Flash® player version 8 or later
<b>Requirements for SMART Video Player</b>	Pentium II 450 MHz processor (700 MHz or faster recommended) Windows 98 operating system or later. Does not run on the Windows NT operating system. Microsoft DirectX® technology 8.1 or later
<b>Mac Computers</b>	700 MHz processor (1 GHz or faster recommended) 128 MB of RAM (256 MB recommended) Mac OS X versions 10.3.9 and 10.4.x 148 MB of free hard disk space for minimum installation (423 MB for full installation with Gallery collections) Safari™ 1.3.2 or later SMART Board software version 9.5 supports Intel® processors (Universal Binary)
<b>Linux Computers</b>	Pentium II 450 MHz processor 128 MB of RAM (256 MB recommended) 185 MB of free hard disk space for minimum installation (460 MB for full installation with Gallery collections) Linux kernel version 2.6 or later X Windows version 11 release 6 (X11R6) or later (must support XRENDER and Xinerama) glibc 2.3.3 (gcc 3.4.2) libstdc++6 Gnome 2.8.0+ or KDE® 3.3+ libraries (recommended) SUSE® 10, Red Hat® Enterprise Linux 4 WS or Fedora™ Core 3+

**NOTE:** Other versions of SMART Board software are available for Unix and Linux operating systems, as well as for earlier versions of Windows and Mac operating systems.

To download other versions, go to [www.smarttech.com/support/software/index.asp](http://www.smarttech.com/support/software/index.asp).

---

## Optional Accessories

<b>USB-XT</b>	16' 5" (5.0 m) USB active extension cable
<b>CAT5-XT</b>	USB to Cat 5 cable extender set
<b>RPEN-ER</b>	Replacement set of four pen tray pens (black, red, blue and green) and rectangular eraser
<b>RPEN</b>	Replacement set of four pen tray pens (black, red, blue and green)
<b>USB-GW</b>	GoWire™ SMART Board software auto-launch USB cable

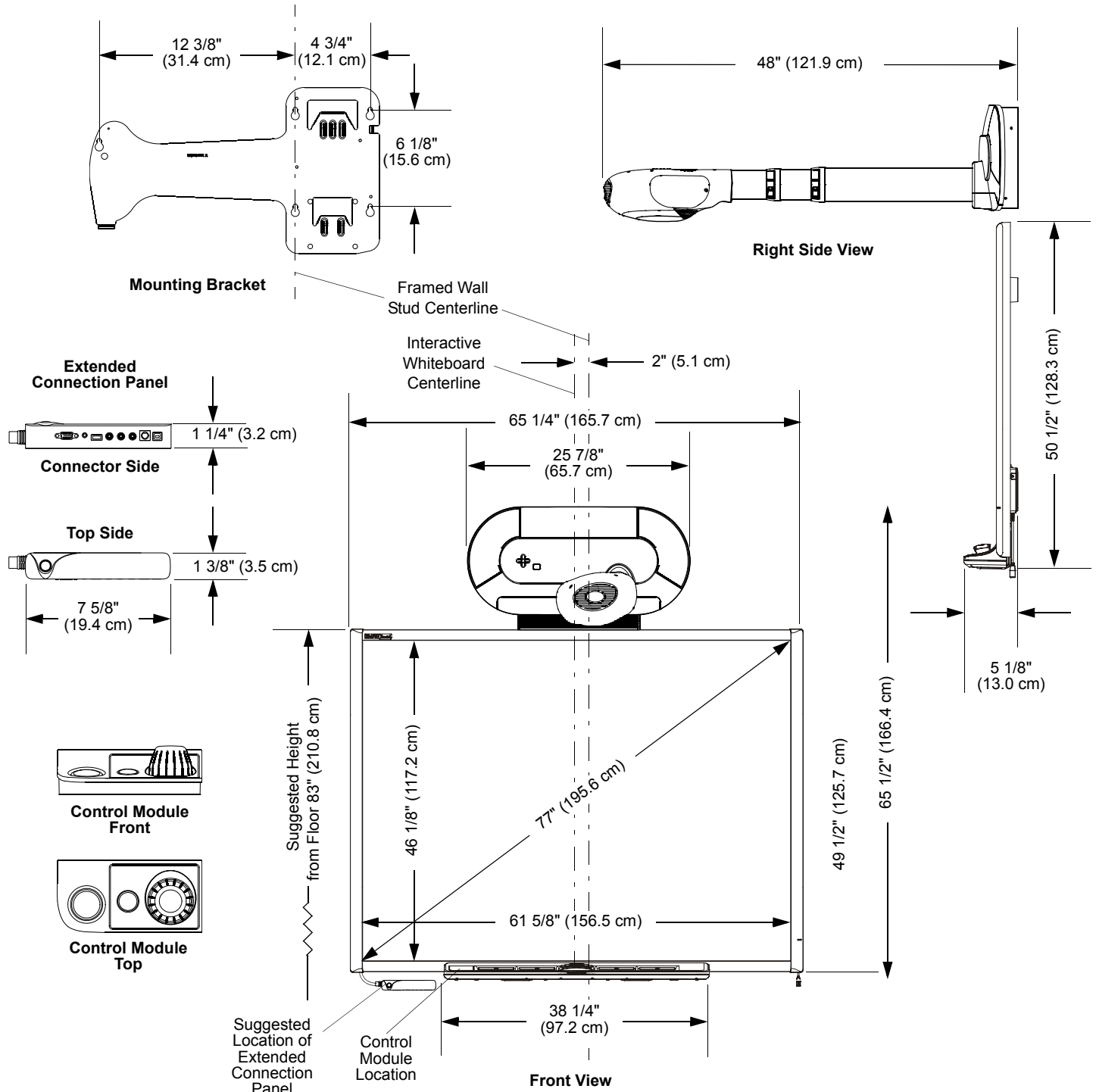
---

## SMART Order Number

<b>680i</b>	SMART Board 680i interactive whiteboard system includes a SMART Board 680 interactive whiteboard integrated and a Unifi 35 projector.
-------------	---

---

Physical Dimensions



**SMART Technologies Inc.**  
 1207 – 11 Avenue SW, Suite 300  
 Calgary, AB T3C 0M5  
 CANADA  
 Phone +1.403.245.0333  
 Toll Free 1.888.42.SMART (Canada/U.S.)  
 info@smarttech.com www.smarttech.com

